

mdf italia



© COPYRIGHT 2019 MDF ITALIA SRL SOCIETA' UNIPERSONALE

2017

SIGN BABY

Designed by Piergiorgio Cazzaniga

MDF Italia celebrates the first ten years of its iconic chair, with a release dedicated to the universe of baby consumers. With Sign Baby, the company thinks about the youngest, since the taste for the beautiful must be nourished since we are children.

The chair, designed by Piergiorgio Cazzaniga, comes in a version reduced by 30% in the new bon ton colours suitable for kids aged 3-10.

Proposed in 7 shades: from delicate bon ton colours up to the energetic orange, red, yellow.

[WATCH THE 360° VIEW OF THE SIGN BABY](#)

[Discover Sign Matt. Click here](#)

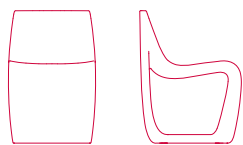
STRUCTURE

The single-material load-bearing structure is in polyethylene (PE), moulded with rotational moulding technology.

OUTDOOR USE

The particular resistance of polyethylene and its simple maintenance make Sign perfect both indoors and outdoors.

SIGN BABY



L38 D44.5 H58.5 cm
seat H35 cm
weight 5 kg

Finishing

The number in the dot corresponds to the number of colour/material finish.

Here below, in the section FINISH OPTIONS, please note all the colours of the materials used for this product.

CHAIR

Structure



Plastic

Finish options

STRUCTURE

Plastic



matt white
polyethylene



matt green
polyethylene



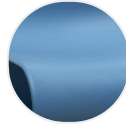
matt yellow
polyethylene



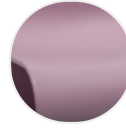
matt orange
polyethylene



matt red
polyethylene



matt light
blue
polyethylene



matt pink
polyethylene